

2026 Women — IN BUSINESS CONFERENCE



Thursday, April 2, 2026
8:00 a.m. – 4:00 p.m. | Lancaster Marriott

2026 Headliner
Carli Lloyd

U.S. Soccer Legend and FOX Sports Analyst

- 2x World Cup Champion
- 2x Olympic Gold Medalist
- New York Times Bestselling Author
- FOX Sports Analyst

AGENDA

- 8:00 a.m.** **Registration and Continental Breakfast**
- 9:00 a.m.** **Welcome Remarks, PA Chamber and Sponsors**
 - Luke Bernstein, President and CEO, PA Chamber
 - Jewell Lester, Senior Vice President of Operations and Finance, PA Chamber
 - Kasey Paulus, Executive Vice President and Chief Operating Officer, WellSpan
- 9:15 a.m.** **Morning Keynote**
 - Neeli Bendapudi, President, Pennsylvania State University
- 9:50 a.m.** **Breakout Sessions**
- 10:40 a.m.** **Networking Break**
- 10:50 a.m.** **Fireside Chat**
 - Dina Powell McCormick, President and Vice Chairman, Meta
 - Kelli Rhee, President & CEO, Arnold Ventures
- 11:35 a.m.** **Networking Break**
- 12:00 p.m.** **Breakout Sessions**
- 1:00 p.m.** **Lunch**
- 2:00 p.m.** **The Big Ideas**
 - Lori Renne, Supervisor, Business Development, UPMC Central Region
 - Patty Sibbach, Co-Owner, Precision Training Concepts
 - Loral Ziemba, Senior Director, Range Resources
 - Christine Martin, President, PPL Electric Utilities
- 3:00 p.m.** **Pennsylvania’s World Cup Moment**
 - Meg Kane, CEO, Philadelphia Soccer 2026
- 3:10 p.m.** **Afternoon Fireside Chat**
 - Carli Lloyd, U.S. Soccer Legend and FOX Sports Analyst
- 4:00 p.m.** **Conclude**

TIME	Freedom Hall A Lower Level	Heritage Ballroom Salon A/B 3rd Floor	Heritage Ballroom Salon C 3rd Floor	Heritage Ballroom Salon D/E 3rd Floor
Breakout Session 1 9:50– 10:40 A.M.	From Interns to Executives: Building Great Teams Across Generations	No More Excuses: Prioritizing Your Health Like a Leader	Breaking Barriers: Women Leading at the Top	Rise Up: What You Need to Advance Your Career
Breakout Session 2 12:00 – 1:00 P.M.	Level Up: Building Your Best Professional Profile	Leading from Anywhere: Building Unified Teams in a Hybrid World	Owning Your Value: Negotiating with Confidence	

BREAKOUT SESSIONS

BREAKOUT SESSION 1: 9:50 A.M. - 10:40 A.M.

Freedom Hall A

From Interns to Executives: Building Great Teams Across Generations

- Shea Zwerver, Moderator, Program Director, Clean Tech, Goodwill International
- Jenn Thompson, Senior Director of Human Resources, VF Corp.
- Angie Meyers, Director of Recruitment and Talent Acquisition, Hershey Entertainment and Resorts

From Gen Z to the Baby Boomer Generation, today's workplace is more generationally diverse than ever. This session dives into the dynamics of how successful teams navigate intergenerational communication styles, leadership expectations, and conflict resolution, offering tools to foster collaboration and lead across age groups.

Heritage Ballroom Salon A/B

No More Excuses: Prioritizing Your Health Like a Leader

- Ashley Zinn, Senior Vice President and Chief People Officer, WellSpan

Too often we put ourselves last. This energizing session will challenge the mindset that women's health and wellness are optional aspects of life. Learn how to reframe your approach to physical and mental well-being, build sustainable habits, and create accountability systems that stick. Because when you're performing at your best, the best days of your life—personally and professionally—will follow.

Heritage Ballroom Salon C

Breaking Barriers: Women Leading at the Top

- Cynthia Figueroa, Moderator, President and CEO, JEVS Human Services
- Terri Lee Taylor, Vice President, Government Affairs & Policy – U.S., Merck
- Beth Henke, EVP, Chief Legal Officer, American Eagle Outfitters, Inc.
- Justine Kasznica, Shareholder and Chair

Explore the evolving landscape of corporate boardrooms and the growing influence of women in governance roles. This session will highlight current trends, barriers to entry, and actionable strategies for securing board seats, whether you're aiming for your first appointment or expanding your leadership portfolio.

Heritage Ballroom Salon D/E

Rise Up: What You Need to Advance Your Career

- Rebecca Lupfer, Senior Vice President, Chief Merchant, the GIANT Company
- Kathleen McKenzie, Vice President, Community Affairs, Highmark Health

Success rarely happens in isolation. This session offers women the tools to boldly identify what they need to grow—whether it's mentorship, sponsorship, resources, or opportunities—and ask for it confidently. Learn how to build a support network, find mentors who champion your vision, and take strategic steps toward your next big move.

BREAKOUT SESSION 2: 12:00 P.M. - 1:00 P.M.

Freedom Hall A

Level Up: Building Your Best Professional Profile

- Catherine Heben, Moderator, Managing Director, KPMG
- Salena Coachman, VP, Talent Sustainability, Talent Acquisition and D&I, Armstrong World Industries

Ready to be the architect of your own reputation? This session will unpack the essentials of personal branding and how to present your strongest professional self—on paper, online, and in person. From optimizing your LinkedIn presence to elevating your voice in meetings and presentations, learn practical frameworks and examples to keep your brand impactful and consistent.

Heritage Ballroom Salon A/B

Leading from Anywhere: Building Unified Teams in a Hybrid World

- Gretchen Clutter, Global Site Lead, Google Pittsburgh

In today's workplace, leadership is no longer confined to the office. This dynamic session will explore how modern leaders can effectively guide hybrid teams toward shared goals, even when their team members are not all in the same room. Learn strategies to foster alignment, boost morale, and maintain momentum across physical and digital spaces. From setting clear expectations to cultivating a mission-driven culture, this session will equip you with actionable tools to lead with clarity, empathy, and impact.

Heritage Ballroom Salon C

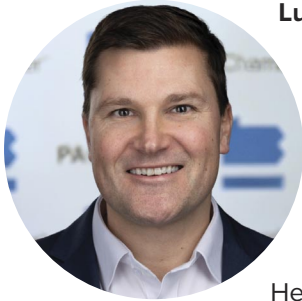
Owning Your Value: Negotiating with Confidence

- Lindsay Andrews, Moderator, Director of Communications, PA Chamber of Business and Industry
- Negin Naraghi, Senior Vice President of Staffing & Workforce Augmentation, Allied Resources Group (ARG)

It's statistically proven—women are often inclined to wait until they've "earned" the right to speak up in meetings or advocate for themselves as part of broader career growth. The result? Too many talented professionals underestimate their value, hesitate in key moments, or feel pressure to prove themselves before being fully heard.

This session explores beyond negotiating compensation into something even more powerful: owning your value. Participants will learn how to enter rooms with confidence and clearly advocate for their ideas and needs. Through practical strategies and real-world examples, this discussion will explore how to better navigate conversations in meetings and boardrooms, and face career-defining moments with conviction, confidence, and purpose. Walk away better equipped to know your value and confidently shape your future career path.

About the Speakers



Luke Bernstein, President and CEO, PA Chamber of Business and Industry

A seasoned financial, government, and public policy professional, Luke came to the organization in 2022 with more than 20 years of experience in the public and private sectors.

Before leading the PA Chamber, Luke was most recently executive vice president, chief operations and technology officer at Orrstown Financial Services. He had served as Orrstown's corporate spokesperson since 2017.

He was previously senior vice president of external affairs at the Pennsylvania Bankers Association from 2015 to 2017 and deputy chief of staff for former Pennsylvania Gov. Tom Corbett from 2011 to 2015.

In addition to his executive leadership roles in the private sector and state government, Luke has experience working at the federal level, as a former appointed advisor in the Administration of President George W. Bush and as an aide in the U.S. Senate. He holds a bachelor's degree in political science and policy studies from Dickinson College, where he also served as an adjunct professor.

Luke also completed the Duke Leadership Program at Duke University's Fuqua School of Business. He is a very active member of his community, serving on numerous boards and as a youth sports coach.



Jewell Lester, Senior Vice President, Operations and Finance, PA Chamber of Business and Industry

In her dynamic leadership role, she oversees the financial, information technology, and operational aspects of the largest business advocacy organization in the state. Demonstrating a strong commitment to excellence, and the seamless integration of key organizational functions, she serves as the chief liaison with several key board-level committees. Jewell holds an MBA from Case

Western Reserve University and a Bachelor of Science in Management from East Stroudsburg University. Additionally, she is a graduate of the Institute of Organization Management program sponsored by the US Chamber of Commerce. Jewell is a member of the United Way of the Capital Region's Women's Leadership Network.



Kasey Paulus is the Executive Vice President and Chief Operating Officer for WellSpan Health

Kasey Paulus is the Executive Vice President and Chief Operating Officer for WellSpan Health. Kasey is responsible for the WellSpan nursing strategic plan, nursing practice, and operations for 4,600 nursing team members across WellSpan Health, including acute care, ambulatory care, homecare and hospice, and care management services. In her role, she champions several initiatives focused on workforce and care model redesign, driving innovation through the lens of people, process, and technology. She is also accountable for increasing the pipeline of nurses through academic partnerships.

Kasey has twenty years of experience in nursing, nursing leadership, healthcare operations, continuous performance improvement, high reliability, and patient safety.

She joined WellSpan in July 2021 where she first served as vice president of Patient Care Services and chief nursing officer at York Hospital. Prior to joining WellSpan, she served as vice president of patient care services and chief nursing officer within the HealthPartners System in Minnesota. Prior to her appointment to CNO, she served as vice president of quality and safety for Park Nicollet.

She earned her Bachelor of Arts in nursing from Gustavus Adolphus College, followed by a master's degree in business administration from the University of Phoenix. She is also a certified executive in nursing practice.



Dr. Neeli Bendapudi, President, Penn State University

Dr. Neeli Bendapudi serves as the 19th of Penn State, having begun her tenure in May 2022. Her vision for the University is grounded in the principles of Purpose, Agility, and Opportunity, with strategic goals focused on student success; research excellence; land-grant impact; diversity, equity, inclusion, and belonging; transforming internal operations; and enhancing the University's health enterprise. She has previously worked as the executive vice president and chief customer officer for Huntington National Bank and as the president of the University of Louisville, in addition to academic and administrative leadership positions with the University of Kansas and Ohio State. As a researcher, her scholarship focuses on the study of consumer behavior in service contexts; she holds a bachelor's degree in English, a master of business administration, and a doctorate in marketing.



Cynthia F. Figueroa, President and CEO, JEVS Human Services (JEVS)

Cynthia F. Figueroa is the President and CEO of JEVS Human Services (JEVS). In this role, she leads a dedicated team of over 1,600 employees across Pennsylvania, New Jersey, and Delaware. With an operating budget exceeding \$130 million, JEVS provides essential services to more than 18,000 people annually.

Cynthia is a dynamic leader with over 25 years of experience in the government and non-profit human service sectors. She builds high-performing, diverse teams and develops outcome-based programs and services. She is also a creative problem-solver, a staunch advocate for creating equitable systems, and a transformative thought leader. Building on this expertise, Cynthia led JEVS to establish the Nonprofit Leaders Group in 2025 to help organizations to stay informed and prepared to navigate an evolving political and funding landscape. The Nonprofit Leaders Group quickly grew to over 200 participants in the first year and is open to all nonprofit leaders.

Prior to joining JEVS, Cynthia served as Deputy Mayor for the City of Philadelphia's Office of Children and Families (OCF), under Mayor Jim Kenney. In this role, she provided leadership and oversight of the Department of Human Services (DHS), the Department of Parks and Recreation, the Free Library of Philadelphia, and PHL PreK and Community Schools. While Deputy Mayor, she also led COVID emergency responses, including access centers for the School District of Philadelphia and citywide food distribution. Her government tenure also includes service as Commissioner and Deputy Commissioner for DHS.

Cynthia previously served as the President and CEO of Congreso de Latinos Unidos and Executive Director of Women Against Abuse. During her tenure at Women Against Abuse, she led the creation of the Philadelphia Domestic Violence Hotline. Cynthia serves on the following boards of directors: the PA Chamber of Business and Industry, the Reinvestment Fund, Jefferson Health Plans, the Philadelphia Zoo, the Center for Law and Social Policy, and the Philadelphia Award. She has previously served on the board for United Way USA (Board Chair), and Planned Parenthood of Southeastern PA. Additionally, she is a member of the International Women's Forum. Cynthia also served on transition teams for Pennsylvania Governor Josh Shapiro and Philadelphia Mayor Cherelle Parker.

In recognition of her leadership and professional achievements, Cynthia has been bestowed with numerous awards and honors. Some of these include being honored as a Pennsylvania Distinguished Daughter by Governor Wolf, a Hispanic Media Heritage Month 2024 honoree, the prestigious Eisenhower Fellowship, the University of Pennsylvania Outstanding Leadership Award, the National Football League/Philadelphia Eagles Hispanic Heritage Leadership Award, the Peter B. Goldberg Aramark Building Community Executive Leadership Award, and the Hispanic Bar Association La Justicia Award. She was also the Ricardo Salinas Scholar for the Aspen Institute Executive Leadership Seminar. Cynthia has a Bachelor of Fine Arts degree from Spring Hill College. She was born in Arecibo, Puerto Rico, and lives in Philadelphia with her husband. They have two children.



Terri Lee Taylor, Vice President, Government Affairs & Policy, U.S. Human Health, Merck

As Vice President of State Government Affairs and Policy, Terri leads Merck's legislative advocacy and policy development for state issues impacting the company across the United States. She and her team collaborate with state elected and appointed officials, governmental entities, and local and national policy organizations to address policy issues that impact the discovery of innovative medicines, vaccines and animal health products while improving and protecting patient access to treatments and care. Since joining Merck, she has also held positions in Sales, Recruiting & Development, and multiple positions in State Government Affairs & Policy.

With more than 30 years of legislative policy experience she specializes in cross-functional advocacy engagement with a diverse network of internal and external partners. Named to the Pennsylvania City & State 2023 Healthcare Power 100, she serves on the boards of the Pennsylvania Chamber of Business & Industry, the Urban Affairs Coalition of Philadelphia, Healthcare Institute of New Jersey, and is a former Chair of the Board for Life Sciences Pennsylvania. She is a regular panelist with the Practising Law Institute providing national training on political activity compliance and transparency. She also represents Merck with national and local industry trade groups, including BIO and PhRMA.

Terri is a recipient of the NOBEL Women Inaugural Women of Distinction Award and was recognized by the Healthcare Businesswomen's Association for her work to protect public interest and promote public health policy. She also received the National Black Caucus of State Legislators Corporate Achievement Award for Partnership & Social Responsibility having served four years as Chair of their Corporate Roundtable. She was honored as one of Merck's Most Amazing Women and received the One Merck Global Diversity and Inclusion Award for her work with external partners.

Terri has a passion to enhance political engagement, improve health equity and access to healthcare, and empower youth to lead. She is a charter member of Phi Beta Omega Chapter of Alpha Kappa Alpha Sorority, Inc. providing community service to Montgomery and Bucks Counties in Pennsylvania. She is also a member of the Philadelphia Chapter of the Links, Inc. focused on programs to strengthen communities through policy, education, and health advocacy. Terri is a "bonus mom" to four children, godmother to many, and champion/coach/advocate to more. She and her husband reside in Collegeville, PA.



Beth Henke, EVP, Chief Legal Officer, American Eagle Outfitters, Inc.

Beth Henke brings over two decades of broad legal and leadership experience, most recently at American Eagle Outfitters (AEO), where she serves as Chief Legal Officer. She is a strategic, action-oriented, and people-focused thinker, valued for enabling legal teams and their cross-functional partners to help drive growth and foster innovation while protecting reputations and financial well-being. She is a trusted thought partner to executives and board members, leveraging her genuine curiosity, humble intelligence, and unwavering focus on results to be the most zealous advocate for and fiercest guardian of the people and ideals that continue to make AEO a great organization.

Before joining AEO in 2017, Beth held several key leadership positions, including Chief Compliance Officer and VP of litigation for EDMC (2013-2017) and labor and employment partner at Reed Smith and Marcus & Shapira. In all of these roles, Beth was instrumental in guiding clients through high-profile litigation and employment matters and driving transformational initiatives. She started her career as a labor and employment attorney in the Pittsburgh office of Morgan Lewis.

Beth is a proud product of Pennsylvania's educational institutions. She received her J.D. with honors from the University of Pennsylvania Law School and her undergraduate degree summa cum laude from Allegheny College. She also graduated from Taylor Allderdice High School in Pittsburgh. She serves proudly as a board member for the AEO Foundation, and recently completed terms as a board member for the ADL's Ohio River Valley chapter and EECM (East End Cooperative Ministry).

Beth resides in the Squirrel Hill neighborhood of Pittsburgh with her husband, Matthew Cunningham, and stays as connected with her adult children (Nicole & Evan) as they, technology, and schedules will permit.



Shea Zwerver, Program Director, Goodwill Industries International

Shea Zwerver is a Program Director at Goodwill Industries International, where she leads national clean energy and skilled trades workforce initiatives. With a background spanning public service, workforce development, and policy, she brings a practical, people-centered perspective to building strong teams across generations. Shea has been recognized as a City & State Pennsylvania Forty Under 40 and a Central Penn Business Journal *Women of Influence*.

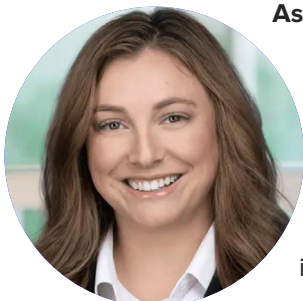


Jenn Thompson, Senior Director of Human Resources, VF Corp.

Jenn Thompson is the Senior Manager of Human Resources at VF Corp., where she champions inclusive hiring practices and drives transformative change across the supply chain sector. With 18 years of experience in supply chain HR, Jenn has become a movement maker for hiring individuals with different abilities—breaking down barriers and building pathways to success.

Her innovative approach to talent strategy has earned her numerous community-based awards and, most recently, recognition from First Lady Lori Shapiro for her impactful work in hiring candidates with disabilities. Over 15% of the employees at Jenn's employer identify as having a disability and the number continues to grow. This is also a movement she is sharing across VF's 6 other distribution center.

Jenn holds a bachelor's degree from Penn State University and is SHRM-certified, bringing both academic rigor and practical expertise to her role. Jenn resides in Lancaster County with her family, where she continues to advocate for equity, opportunity, and forward-thinking leadership.



Ashley Zinn, Senior Vice President and Chief People Officer, WellSpan Health

Ashley Zinn is Senior Vice President and Chief People Officer for WellSpan Health. She leads enterprise-wide people strategy, advancing a culture where 23,000 team members are engaged, supported, and empowered to thrive.

Ashley brings more than 15 years of progressive HR leadership in large, complex healthcare organizations. She joined WellSpan in 2016, holding roles of increasing responsibility, most recently as Vice President of Human Resources.

She has been a driving force behind many of WellSpan's strategic priorities, including workforce planning and position control, talent acquisition, labor relations, acquisitions and divestitures, employee health and safety, and strategic HR business partnerships.

Before joining WellSpan, Ashley served in HR leadership at St. David's Healthcare in Austin, Texas, where she supported the organization through its Malcolm Baldrige National Quality Award recognition and the launch of new women's and children's hospitals.

Ashley holds a Master of Business Administration in Healthcare Management from Walden University and a Bachelor of Arts in Psychology from Shippensburg University.

She maintains active certifications as a Senior Professional in Human Resources (SPHR) and SHRM Certified Professional (SHRM-CP). She also serves on the South-Central Workforce Development Board and is a past president of the Hanover Area Human Resources Association.



Rebecca Lupfer is chief merchandising officer at The GIANT Company

Rebecca Lupfer is chief merchandising officer at The GIANT Company, a modern grocer known to customers as GIANT and MARTIN'S, proudly serving families across Pennsylvania, Maryland, Virginia, and West Virginia since 1923.

Named to her current role in August 2024, Lupfer joined Ahold Financial Services in 2005 as a business analyst and held various positions of increasing responsibility through her 20+ year career. She held various positions in multiple functions including vice president of merchandising - center store, vice president of the company's Mid-Atlantic division, chief financial officer, and most recently, chief merchandising officer.

Lupfer currently serves on the board of directors for the Central Pennsylvania Food Bank where she is secretary of the board and the Pennsylvania Chamber of Business and Industry, chairing the Chamber's investment committee. In addition, she serves as the executive sponsor of GIANT's women's business resource group, supporting and mentoring women of all levels within the organization.

Lupfer has received numerous industry and community awards throughout her career, including being a three-time winner of Progressive Grocer's Top Women in Grocery Award. She has been a recipient of the Central Penn Business Journal's 40 Under 40 Award, City & State PA Above and Beyond Award, the YWCA of Greater Harrisburg's Woman of Excellence Award, and was honored by Mass Market Retailers as Person Who Made a Difference.

She earned an MBA from Lebanon Valley College and a bachelor's degree in accounting at The Pennsylvania State University.



Kathleen McKenzie, Vice President, Community Affairs, Highmark Health

Kathleen McKenzie is the Vice President of Community Affairs at Highmark Blue Shield. As a highly accomplished healthcare executive and community leader she has years of experience driving strategic initiatives, fostering impactful partnerships, and securing significant funding for non-profit organizations across Pennsylvania and Delaware.

Kathleen holds various leadership roles and has won numerous awards. She has received the Healthcare Heroes Award for Community Outreach, the Legacy of Community Service Award and is an Athena Award recipient. Most notably, she achieved award winning results working with diverse communities using mobile clinics with multicultural healthcare professionals to overcome barriers to care in vulnerable communities. She currently serves on the board of the United Way of the Capital Region and is a member of Penn State Health's Cancer Committee.



Dina Powell McCormick, President and Vice Chairman, Meta

Dina Powell McCormick is President and Vice Chairman for Meta. She previously worked at Goldman Sachs for 16 years where she was Global Head of the Sovereign Business, Global Head of Sustainability and Inclusive Growth, and served on the firm's Management Committee and the Firmwide Client and Business Standards Committee. She initially joined Goldman Sachs in 2007, and from 2007 to 2017 she served as Head of the firm's Impact Investing Business and led the development of Goldman Sachs' inclusive growth initiatives, including 10,000 Women, 10,000 Small Businesses, and One Million Black Women. Earlier in her career, she served in the U.S. government for more than a dozen years, including as Assistant to the President for Presidential Personnel and Assistant Secretary of State and Undersecretary for Public Affairs and Public Diplomacy. In 2017, she served as Deputy National Security Advisor. She is currently Chairman of the Robin Hood Foundation Board and a member of the Board of the Exxon Mobil Corporation. In addition, she serves as a Trustee of the National Geographic Society Board, the Lincoln Center for the Performing Arts, Mount Sinai Hospital, and the Atlantic Council.



Kelli Rhee, President & CEO, Arnold Ventures

Kelli Rhee joined Arnold Ventures, then called the Laura and John Arnold Foundation, as director of venture development in 2013. She became chief strategy officer in 2016. Since stepping into the CEO role in 2017, Kelli has scaled Arnold Ventures' contributions by 40%, expanded its team, and grown its presence to offices in Houston, New York City, and Washington, D.C. She also led the organization's strategic restructuring from a traditional foundation to a limited liability company, unlocking new opportunities for mission-aligned investments.

Under Kelli's leadership, Arnold Ventures has made significant policy impact across multiple sectors. The organization helped enact major health care reforms, including the No Surprises Act and provisions in the Inflation Reduction Act, projected to save over \$100 billion. In higher education, Kelli led reforms included in the 2025 One Big Beautiful Bill Act, expected to generate \$250 billion in savings while improving student outcomes. Kelli's leadership also resulted in the advance of bipartisan energy permitting reforms and support of pro-housing legislation across many states. In public finance, Arnold Ventures launched the Program Integrity Alliance and partnered with the Paragon Health Institute to reduce billions in government waste. In criminal justice, the organization backed initiatives such as the Real-Time Crime Index, the Federal Prison Oversight Act, and Pennsylvania's VICTIM Act, all aimed at enhancing public safety and accountability.

Kelli's career spans management consulting, health care, and venture capital, with deep expertise in strategy, governance, and change management. She was recently named among Modern Healthcare's "100 Most Influential People in Healthcare" and serves on the Board of Directors and Executive Committee of the Greater Houston Partnership.

Kelli earned an MBA from Stanford Graduate School of Business, a master's degree from Stanford Graduate School of Education, and a bachelor's degree in economics from Northwestern University. Kelli lives in Houston with her husband and three children.



Catherine Heben, Managing Director, KPMG

Catherine Heben is a Managing Director in KPMG's Audit and Assurance practice, based in the Harrisburg office. As an accomplished leader in the consumer goods and retail sector, she oversees complex audit engagements, fosters the development of high-performing teams, and contributes to exceptional client service as well as firm growth.

For 15 years, Catherine has worked with a wide range of companies helping them navigate the complexities of the financial world. Her expertise is rooted in a deep understanding of PCAOB requirements, AICPA standards, and SEC regulations, but her passion lies in turning that expertise into value. She has spearheaded efforts to modernize audit practices by introducing advanced AI and data analytics, resulting in more insightful findings, better informed decision-making, and improved efficiency.

Her work is ultimately about building trust with clients, stakeholders, and the teams she leads. As a passionate advocate for mentorship, she extends this people-first approach to her role as Performance Management Leader, consistently working to spotlight talent and elevating emerging leaders.

Catherine earned a Master of Science in Accounting with Honors from the University of Baltimore and a Bachelor of Arts in Business with Honors from the University of Notre Dame of Maryland. She is a Certified Public Accountant in Maryland and Virginia.

Outside of her professional life, Catherine is proud to share her journey with her husband, Ethan, and their three young sons. Active in her community, she volunteers for the American Heart Association and serves on the executive leadership team for Go Red for Women, furthering her commitment to developing the next generation of leaders and fostering a vibrant culture both in her community and at KPMG.



Salena Coachman, VP, Talent Sustainability, Talent Acquisition and D&I, Armstrong World Industries

Salena J. Coachman Salena J. Coachman serves as Vice President of Talent, Sustainability, Talent Acquisition & Development at Armstrong World Industries (AWI), where she leads the company's People Pillar—driving talent sustainability, community impact and engagement, enterprise learning strategy, and full-cycle talent acquisition execution. In her role, Salena is responsible for shaping workforce capability, developing future-ready talent pipelines, and advancing learning and development initiatives that support long-term organizational growth and sustainability. Prior to joining AWI, Salena built a distinguished 22-year career at ExpressJet Airlines, culminating in her role as Director of Employee Relations, Engagement, and Culture, where she led employee relations strategy, organizational engagement, and culture-shaping programs. During her tenure, she also served as Board President of WINGS (When in Need, Get Support), ExpressJet's nonprofit employee support foundation. Today, Salena serves as Board President of the Armstrong World Industries Foundation and the AWI Foundation Board, supporting philanthropic investment and community impact aligned to Armstrong's mission and values. Since relocating to Lancaster County in April 2021, Salena has become a deeply engaged civic and workforce leader, serving on multiple community and workforce-development boards and advisory committees, including:

- Lancaster County Community Foundation
- United Way of Lancaster County
- Lancaster Cleft Palate Clinic
- Brightside Opportunity Center
- Lancaster County Workforce Development Board
- Lancaster General Health / Penn Medicine Foundation
- Lancaster Chamber Excellence Exchange & Women in Business Advisory

She is also a facilitator and strategic partner for Career Ready Lancaster, supporting workforce alignment, industry partnerships, and equitable economic mobility across the region. Salena studied English and Vocal & Performing Arts at the University of Texas at Arlington, later transferring to the University of Houston. A passionate advocate for lifelong learning, people development, and community impact, Salena brings strategic vision and a people-centered leadership philosophy to every organization she serves. Outside of her professional work, Salena enjoys family, global travel, cooking, and fitness. She is a dedicated daily-training athlete and believes in embracing life fully, building community boldly, and leading with purpose.



Angela Meyers, Director of Talent Acquisition and Recruitment, Hershey Entertainment & Resorts

Angela Meyers is the Director of Talent Acquisition and Recruitment at Hershey Entertainment & Resorts (HE&R), where she leads enterprise-wide recruiting, staffing, and workforce development strategies for one of Central Pennsylvania's most recognized organizations. In this role, Angela is responsible for building and sustaining a dynamic, high-performing workforce while aligning talent strategy with long-term organizational objectives.

With a career spanning more than 27 years at HE&R, Angela brings a unique perspective having leadership roles in Reservations, Sales, and Revenue Management. She is recognized throughout her career for building successful teams, developing leaders, and driving measurable business outcomes, including revenue optimization and operational excellence. Her diverse experience across multiple business functions provides a well-rounded and strategic perspective on leadership and talent development.

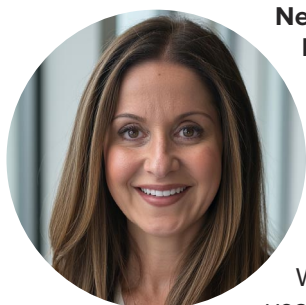
In 2025, Angela was the recipient of HE&R's' most prestigious peer-to-peer recognition, the Legacy of Excellence Award, recognizing her enduring impact, leadership, and commitment to people and culture. She is also a YWCA Tribute to Women of Excellence honoree, reflecting her dedication to leadership, community involvement, and advancing opportunities for others.

Beyond her professional role, Angela serves on the Central Pennsylvania Breakthrough T1D Chapter, where she is currently the Community Engagement Chair and Immediate Past President. Under her leadership, the chapter has raised more than \$1.2 million the past two years to support research, cures, and breakthroughs for Type 1 Diabetes, while also expanding education and connection opportunities for individuals and families within the community. Angela is a graduate of Elizabethtown College and resides in Manheim with her son, Will.



Justine Kasznica, Shareholder and Chair of the Emerging Technologies Group, Babst Calland

Justine Kasznica is a shareholder and chair of the Emerging Technologies Group at Babst Calland. With a focus on technology and commercial transactions, she represents clients in sectors including robotics, artificial intelligence, autonomous vehicles, drones, and commercial space. Her work includes advising technology companies, investor groups, universities, and research institutions on matters related to software, SaaS, IoT, and AI products and services. Her experience also spans corporate finance, technology and commercial transactions, and regulatory compliance for corporations across a wide range of industries. In addition, she advises and counsels companies in navigating the complex legal landscape of data center development, ensuring projects are compliant with relevant laws and regulations.



Negin Naraghi, Senior Vice President of Staffing & Workforce Augmentation, Allied Resources Group (ARG)

Negin Naraghi is the Senior Vice President of Staffing and Workforce Augmentation at Allied Resource Group, where she leads strategy, growth, and delivery across engineering, IT, and professional services. She focuses on scaling operations, developing leadership teams, and driving initiatives that support long-term business performance.

With more than 20 years in the staffing and talent solutions industry, including 14 years in progressive leadership roles at a global workforce solutions organization, Negin has led large, complex delivery organizations and global talent programs supporting Fortune 500 environments. She is recognized for building high-performing teams, strengthening operational discipline, and creating structured organizations positioned for sustainable growth.

Known for her strategic and people-centered leadership style, Negin is particularly focused on team development, leadership alignment, and elevating performance to drive measurable business outcomes.



Gretchen Clutter, Global Site Lead, Google Pittsburgh

Gretchen Clutter is the co-lead of Google Pittsburgh and the Engineering Lead for Google's Capacity Delivery group. Her day job is transforming the way machines are brought online across Google's global datacenters. Her innovative software & hardware approach has cut lead times from months to days to hours, saving Google billions of dollars. In more than a decade at Google she has held a variety of engineering, analytical, and technical leadership positions across Google's Commerce and Reliability Engineering organizations. Prior to Google she co-founded a children's mental health startup, where she served as Vice President of Operations & New Media development. She is currently an active board member for The Pittsburgh Technology Council and The Children's Institute. Educationally, her background stems from Westminster College, Duquesne School of Pharmacy, and the Wharton School of the University of Pennsylvania.



Patty Sibbach, Co-Owner, Precision Training Concepts

Patty Sibbach is a health and wellness leader with 30+ years in healthcare, women's health, and fitness. A former collegiate athlete and pharmaceutical sales leader, she now speaks to audiences about balancing career, family, and well-being. Recognized as a CPBJ *Woman of Influence* and Luminary Award finalist, Patty inspires organizations and communities with her message of resilience, movement, and healthy living.



Lori Renne, Supervisor, Business Development, UPMC Central Region

Lori Krause Renne is a seasoned marketing, sales, and strategic planning professional with more than 30 years of experience driving growth, engagement, and results. She currently serves as Supervisor, Business Development for the UPMC Corporate Ambassador Resource and Employer Solutions (CARES) team, where she partners with corporate and community wellness clients throughout Central Pennsylvania.

In her role, Lori works closely with businesses to strategize and develop customized wellness programs designed to enhance employee health, productivity, and morale—strengthening the overall well-being of the corporate family. Known for her relationship-driven approach and deep understanding of employer needs, she is a trusted advisor to organizations seeking impactful, sustainable wellness solutions.

Lori is actively involved in her community and serves on the Board of Directors for the Members 1st Charitable Foundation and Breakthrough T1D. She is also a Membership Ambassador for both the Harrisburg Regional Chamber and the Lebanon Valley Chamber of Commerce, where she was recognized as the 2024 Ambassador of the Year. In addition, Lori is an active member of the UPMC Pinnacle Foundation's Women's Giving Circle. Lori is also known for her dynamic and practical presentations on effective networking. She brings real-world insight, energy, and actionable takeaways that help professionals build meaningful connections and maximize their influence.

She holds a Bachelor of Arts in Communication, with a minor in English, from La Salle University. A native of Lebanon, Pennsylvania, Lori resides in New Cumberland with her husband, Brendan, their son, Dylan, and their goldendoodle, Hank. Outside of work, she enjoys reading, walking, yoga, all things Pittsburgh, and spending quality time with her family.



Christine Martin, President, PPL Electric Utilities

Christine M. Martin is president of PPL Electric Utilities, the subsidiary that provides electric delivery services to 1.5 million customers in eastern and central Pennsylvania. PPL Electric Utilities operates and maintains a vast electric delivery system that spans 10,000 square miles and serves a population of more than 3 million.

Martin joined PPL in June 2003. Prior to becoming president of PPL Electric Utilities in September 2023, Martin was PPL's senior vice president—Public Affairs and chief sustainability officer, overseeing the corporation's advocacy and policy development, corporate communications and sustainability efforts.

Before coming to PPL, Martin was deputy secretary for water management in Pennsylvania's Department of Environmental Protection, where she was responsible for statewide water resources management and policy. Martin also served as senior policy manager for environmental, infrastructure, energy and regulatory issues for Governors Tom Ridge and Mark Schweiker and as executive policy specialist for Governor Ridge.

Martin holds a Bachelor of Arts in Political Science/International Studies with minors in Economics and French from Indiana University of Pennsylvania and a Master of Public Administration from The Pennsylvania State University. She also completed studies at the University of Nancy in France.

A native of Pennsylvania, Martin is co-chair of the Edison Electric Institute's Operating Company Leadership Work Group. She also serves on the boards for the Energy Association of Pennsylvania, the Lehigh Valley Economic Development Corporation, the Pennsylvania Chamber and the Baum School Board of Trustees. Martin is also an officer of the PPL Foundation.



Laural Ziemba, Senior Director, Range Resources

Laural Ziemba is senior director at Range Resources. Her responsibilities include directing the company's public outreach efforts, including the company's community outreach program, corporate philanthropy program and local government initiatives. Laural's career has been primarily spent in the energy industry, having held similar positions at other Pittsburgh-region energy companies.

Laural is a graduate of Duquesne University, where she earned a Bachelor of Arts in Communications and a graduate of Waynesburg University, where she earned a Master of Business Administration.

Laural is a member of the board of directors for the Southwest Corner Workforce Development Board, Washington Health System Foundation, and Washington County 2000 Turkeys Food Drive Campaign.

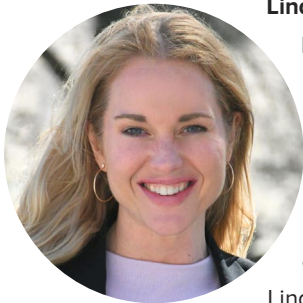
Laural is the recipient of the 2024 Washington County ATHENA Leadership Award® conferred by the Washington County Chamber of Commerce. The ATHENA Award is designed to recognize those who demonstrate professional excellence, community service, and for actively assisting women in their attainment of professional goals and leadership skills.

Laural received the Timothy & Carolyn Thyreen Service Leadership Award conferred by Waynesburg University in June 2022. This award is presented to those who exemplify servant leadership in their daily lives, resulting in a transformational effect on their area of focus.

In 2016, Laural was the recipient of the Washington County Chamber of Commerce Young Athena Award and in 2015, she was a recipient of the Pittsburgh Business Times Women in Energy Leadership Award.

Laural is a proud alumna of Leadership Pittsburgh's XL cohort and in 2025, Harvard Business School's Young American Leaders Program.

Laural currently lives in Cecil Township, Washington County, with her husband Chad and daughter Leah.



Lindsay Andrews, Director of Communications, PA Chamber of Business and Industry

Her chief responsibilities include writing e-newsletters and promotional material for business audiences, ensuring updates to the PA Chamber website, crafting scripts for PA Chamber educational events, working with the C-suite on materials for various events, developing social media content, and coordinating with the Government Affairs team on communications, among other duties. But her main love is telling our members' stories. Among her favorite responsibilities is curating regularly appearing content for the PA Chamber's member-centric blog, The Current, which features a mix of news, feature articles, and brief video segments highlighting PA Chamber members' latest achievements, as well as our organization's advocacy efforts.

Lindsay's tenure with the PA Chamber began in 2011. Prior to that, she worked at a legislative information agency where she wrote detailed stories on state House and Senate committee meetings and press conferences; provided bill analyses and live coverage of legislative session; and trained clients on use of their accounts. Lindsay is a member of the United Way of the Capital Region's Women's Leadership Network, and a member of the Pennsylvania Public Relations Society. She earned her B.A. from Michigan State University and hails from the Harrisburg region, where she lives with her husband, Tom, and their two daughters.



Meg Kane, CEO, Philadelphia Soccer 2026

Meg Kane serves as Host City Executive/CEO for Philadelphia Soccer 2026. Joining Philadelphia's bid effort in 2019, Meg served as a key liaison between the City, hospitality partners, sports venues, and FIFA as its winning bid was crafted throughout the COVID-19 pandemic and beyond.

In her current role, Meg leads the Local Host Committee, which is responsible for ensuring the successful hosting of Philadelphia's six World Cup matches, running a 39-day Fan Festival, and welcoming more than a half million visitors to Philadelphia in the summer of 2026. She serves as one of the organization's lead spokespersons and an unabashed champion for the power of sports to unite people, drive economic impact, and elevate Pennsylvania's global brand.

Concurrent with her leadership work for Philadelphia Soccer 2026, Meg is the President and CEO of Signature 57, a strategic communications firm. Meg previously served as Co-Lead of Strategic Communications for the World Meeting of Families – Philadelphia 2015 and the visit of Pope Francis. For her work, she was awarded the Benemerenti Medal for exceptional service to the Church from His Holiness in 2016.

Meg holds a B.A. from La Salle University (Philadelphia) and an M.A. in Public Relations, Crisis Communications and Political Rhetoric from the University of Maryland (College Park).

Special Thanks to our Sponsors

EXCLUSIVE PRESENTING SPONSOR



EXCLUSIVE KEYNOTE SPONSOR



EXCLUSIVE PLATINUM SPONSOR



EXCLUSIVE TECHNOLOGY SPONSOR



EXCLUSIVE LEADERSHIP SPONSOR



SILVER SPONSORS



WELLNESS SPONSOR



BRONZE SPONSORS

